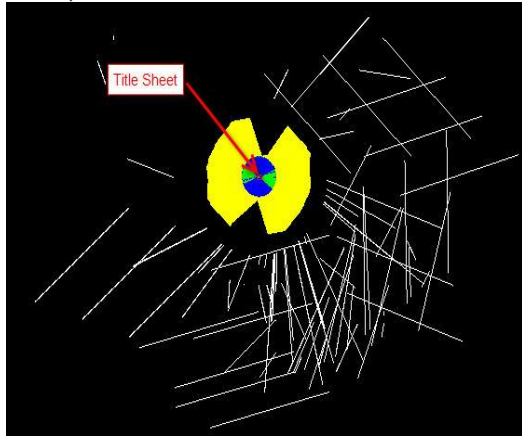


16_29 Possible Corruption or Large Shapes in Title

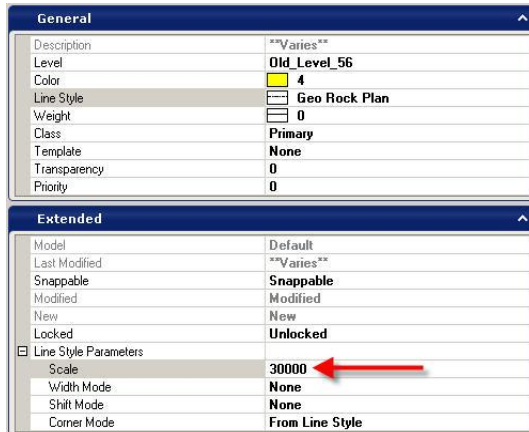
Question:

Large shapes and long random lines are appearing on my title sheet. Is my DGN file corrupted or is there an explanation for this condition?



Answer:

The "garbage" graphic elements are a direct result of copying and scaling down the GIS county maps (DGN) for your title sheet vicinity map. While scaling down the element size, the actual linestyle scale is not affected. These elements are indeed still at their original custom linestyle scale of 30000.



To change the linestyle scale of a Microstation element, select the element and key-in "change linestyle scale 1". This will change the linestyle scale from 30000 to 1. We now can see that some of these lines are part of the original GIS map.

